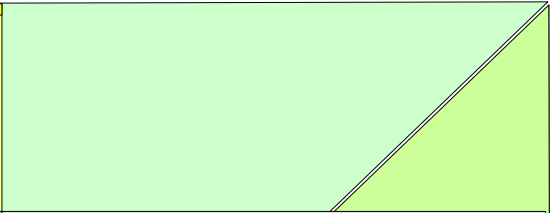
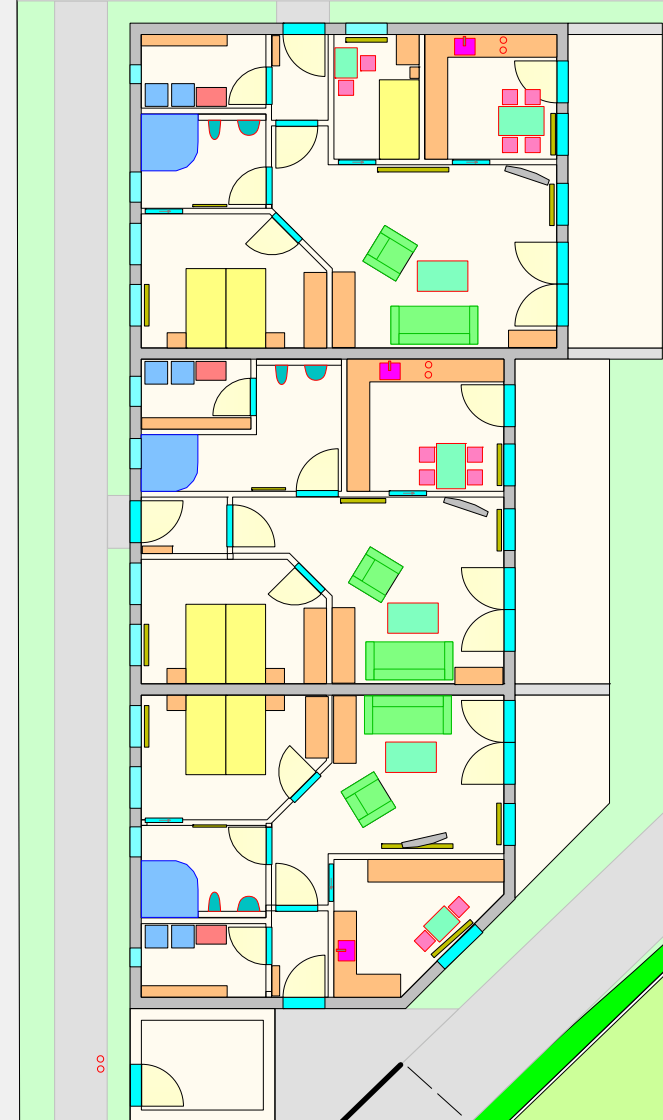


Garage
Garage

Schutzmauer
Carport



Baustraße



(in m ²)	I	II	III
Wohnen	33,63	27,96	24,34
Küche	10,88	16,62	13,07
Schlafen	15,47	13,74	13,38
Gäste	8,71		
Bad	8,25	12,78	8,91
Flur	3,29	3,15	3,01
HWR	6,60	4,32	6,60
Gesamt	86,83	78,57	69,31

5% Gefälle

